

Yagi Antenna 18 Dbi



An ISO 9001: 2015 Certified Company



Technical Specifications

• Model No.	YAGOD4G018
• Frequency Range	698-960/1710-2700MHz
• Beam Width	60±50°
• Polarization	Vertical
• Gain	18 DBI
• Lightning Protection	Direct Ground
• VSWR	<1.5:1
• Maximum Input Power	100 W
• Impedance	50 Ω
• Connector Type	SMA M/N F/ Customized
• Operating Temp.	-40~+55°C
• Mounting	Clamp Type / Pole Mount
• Cable Length	300 MM / Customized
• Cable	RG58
• Compliances	CE compliant
• ROHS	ROHS Compliant
• Brand	Gleam Light India


FEATURES

- Wide Frequency Range
- Light Weight
- High gain
- Easy to Install
- Vertical or Horizontal Polarization
- All-Weather Operation
- Best for Outdoor applications.

[Click Here](#)



Installation Guidance

CALL OR  **+91-8800386366**

Follow Us For More Updates **GLEAMLIGHTINDIA** /     

Info@gleamlightindia.com/www.gleamlightindia.in/gleamlightindia.com/www.gleamindia.com

GLEAM LIGHT INDIA PRIVATE LIMITED

12B Block -A, Behind Kanishka Garden, Amar Colony Main Rohtak Road Nangloi, New Delhi, Delhi 110041

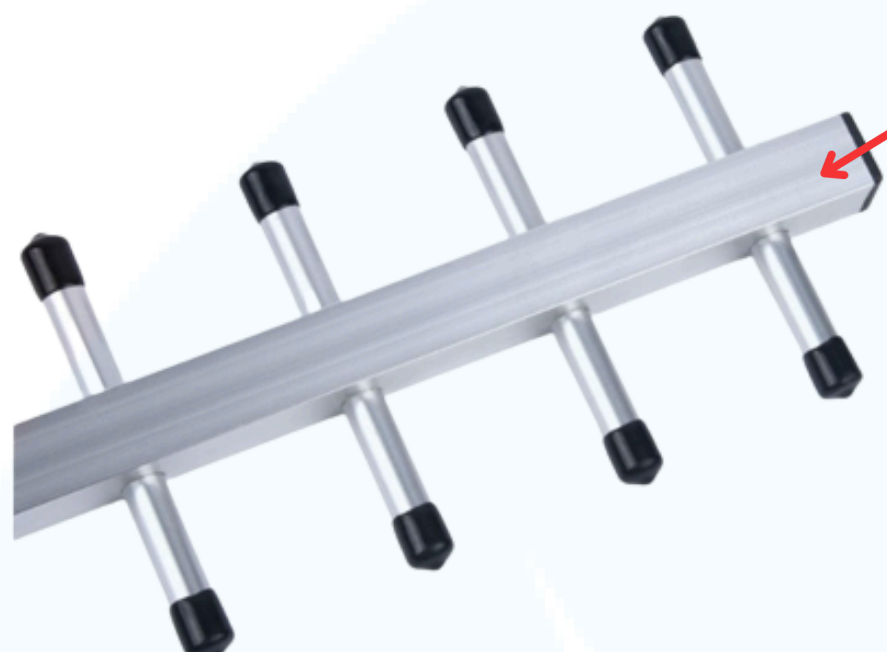


Yagi Antenna 18 Dbi



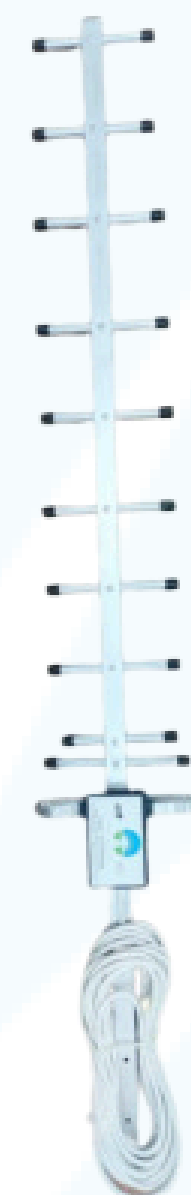
An ISO 9001:2015 Certified Company

High Quality Aluminium Structure

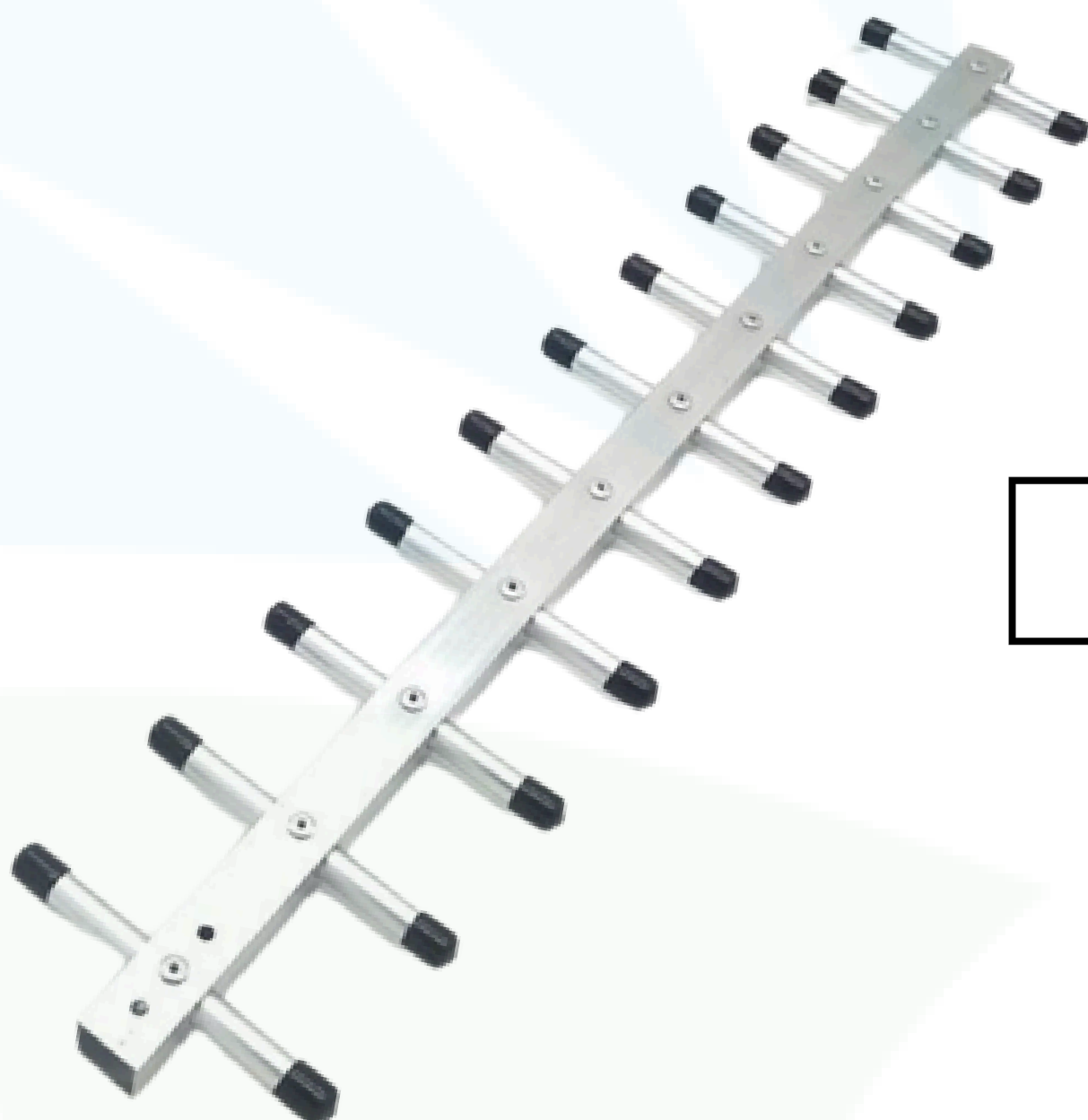


The connections between elements and other components is secure and well-constructed to minimize losses and ensure stable performance over time.

The unique design of the yagi antenna feed which works as matching device to keep the VSWR low resulting in increased efficiency of the yagi with reflector.



The antenna is also be robust and reliable, with stable performance over time and in various environmental conditions.



A GSM Yagi antenna is a useful tool for improving the reliability and coverage of GSM networks, and can be used in a variety of applications.



CALL OR  **+91-8800386366**

Follow Us For More Updates **GLEAMLIGHTINDIA** /     

Info@gleamlightindia.com / www.gleamlightindia.in / www.gleamlightindia.com / www.gleamindia.com

GLEAM LIGHT INDIA PRIVATE LIMITED

12B Block -A, Behind Kanishka Garden, Amar Colony Main Rohtak Road Nangloi, New Delhi, Delhi 110041

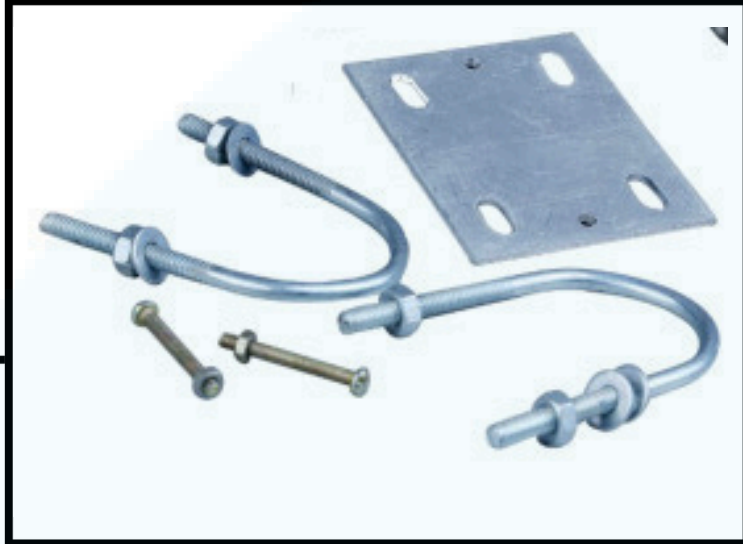


Yagi Antenna 18 Dbi



An ISO 9001: 2015 Certified Company

Antenna
Mounting Clamp



The clamps are designed to securely fasten the antenna to the support structure.

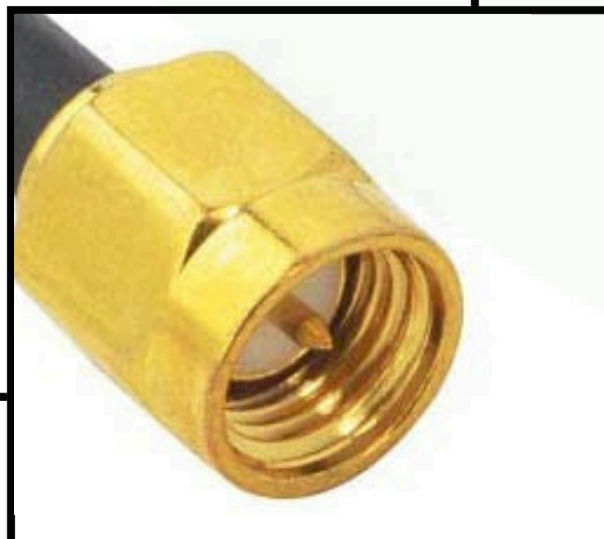


Cable
Rg 58

N Female



SMA M



Yagi Antenna Connector is
Customize

CALL OR  **+91-8800386366**

Follow Us For More Updates **GLEAMLIGHTINDIA** /     

Info@gleamlightindia.com / www.gleamlightindia.in / www.gleamlightindia.com / www.gleamindia.com

GLEAM LIGHT INDIA PRIVATE LIMITED



12B Block -A, Behind Kanishka Garden, Amar Colony Main Rohtak Road Nangloi, New Delhi, Delhi 110041